

DC MHE Automation, Sortation, & Controls Integration



Customer: Leader in Manufacturing Outdoor Footwear & Work Apparel

Systems Integration

*Sales · Parts · Rental · Service
Leasing · Fleet Management*

KEY SAVINGS POINT

*Reduced headcount by 20% while growing
their fulfillment by more than 50%!*

Executive Summary

Complete turnkey design, programming and installation of conveyor, two sorters, put-to-light order consolidation, recirculation lines, in-line shrink tunnels, in-line labelers, in line dimensioning, and in-line weighing along with lighting, SKU and inventory storage optimization.

Challenges

Due to acquisitions and increased sales volume, this global shoe distributor outgrew the existing conveyor system's fulfillment capacity. This caused issues in meeting customer service demands for timely delivery which affected the ability to grow profitably.

Solution

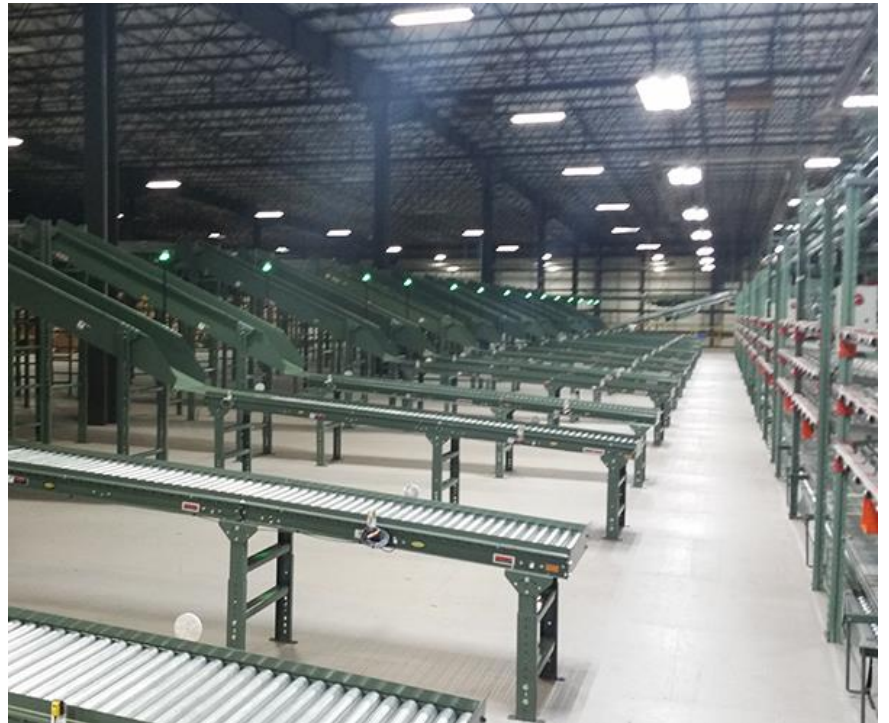
As a result of this challenge, they engaged the expertise of Top Shelf to design, supply, install and service a system with increased capacity to handle growth for the next 10 years and beyond.

The Result, Return on Investment and Future Plans

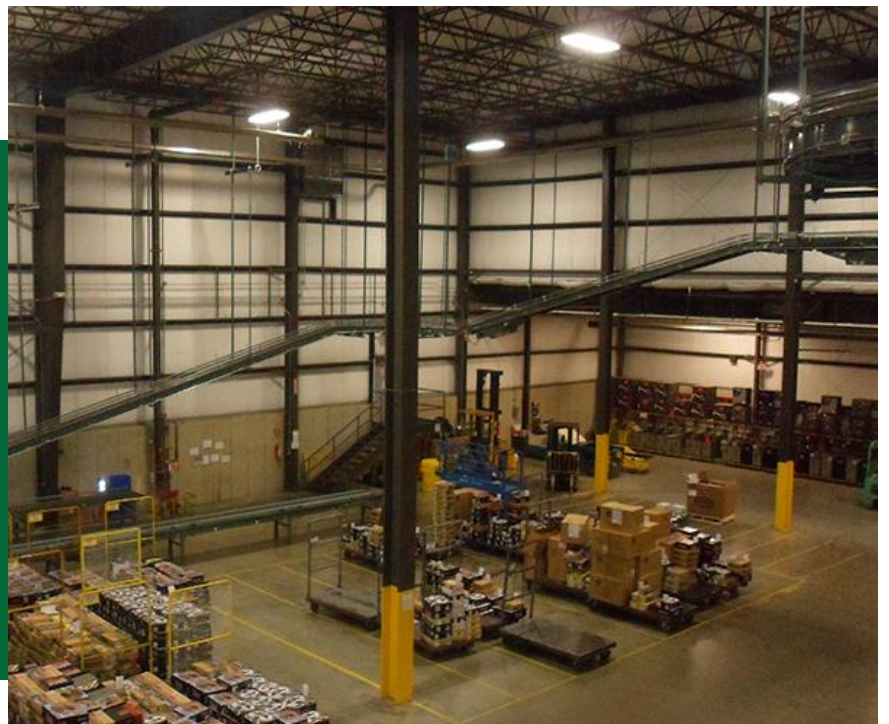
This automation upgrade allowed Rocky Brands to manage the interface with their WMS/ERP system to more than triple the number of sortation stations, increase employee productivity, and reduce headcount to grow their fulfillment by more than 50%. Furthermore, the in-line shrink tunnels coupled with the dimensional scanners and in-line weighing allow Rocky to reduce corrugated waste and decrease shipping costs dramatically.

“Top Shelf provided design expertise as well as creative solutions to complement their personalized project management supervision throughout the automation upgrade process. The design and performance allowed us to more than double our packing stations to meet our growth objectives. Top Shelf’s expertise in sortation, pick/put to light technology, dimensional scanners and in-line scales allowed us to meet our tight project milestones without sacrificing our fulfillment obligations to our clients.”

Kevin Koster – Director of Distribution Services



System Sorts to 17 Put to Light Bays for Order Consolidation



Induction Line